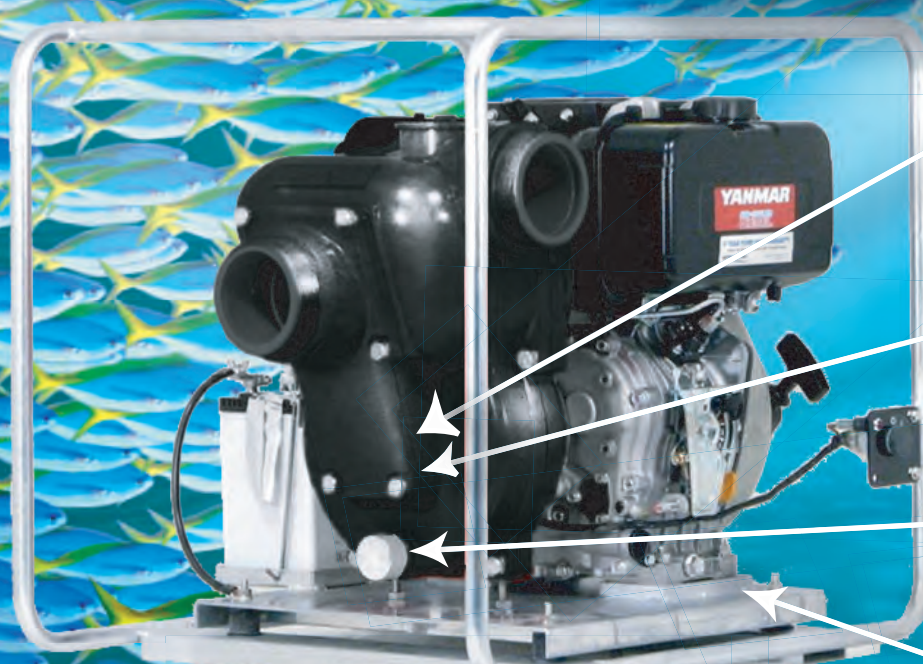


# **Life Extending Type for Sea Water Application**

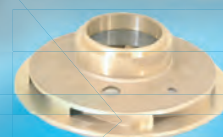
**( Transfer · High Pressure )**

## **A various Rust Prevention Device for Sea Water !**

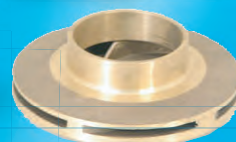
- The whole pump body is rust proofing coated!
- All Stainless Fittings !
- Bronze made Impeller & Inner case!
- Zinc contained drain cap for preventing galvanic corrosion!
- Rust Prevention device on Hose Joint & Hose Clamp Band.



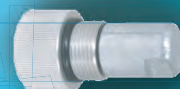
**QP-402SLD/Marine**



**Bronze Volute Casing**



**Bronze Impeller**



**Zinc Drain Cap**

**Galvanized Frame**



**QP-205SLD/Marine**





**QP-402D Marine**



**QP-303D Marine**



**QP-T205SLTD Marine**

## Specification & Performance

### Big flow Version

Model	QP-303D	QP-402D	QP-402SLD
Engine Type	YANMAR L48	YANMAR L100	YANMAR L100
Suction × Discharge (mm)	80 X 80	100 X 100	100 × 100
Max. Head ( m )	30	32	50
Max. Capacity (L/min.)	1000	1530	1400
Net Weight (kg)	46.5	113	113
Engine Net Power (PS)	4.7	10	10

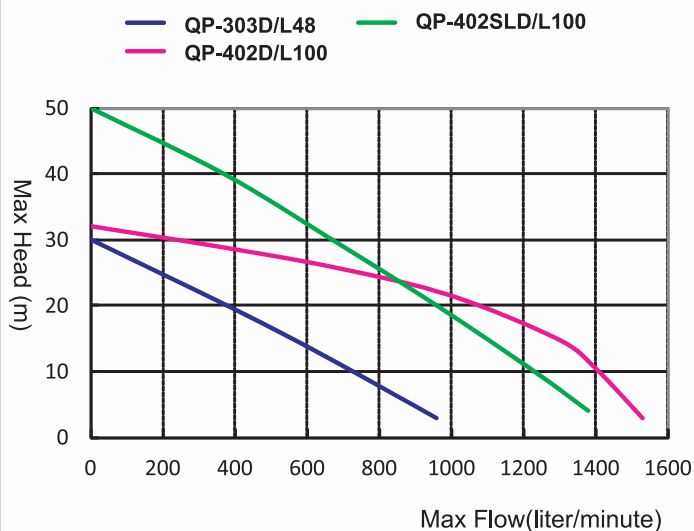
### High Pressure Version

Model	QP-T205SLTD	QP-205SD
Engine Type	YANMAR L100	YANMAR L48
Suction × Discharge (mm)	50 X 50	50 X 50
Max. Head ( m )	90	60
Max. Capacity (L/min.)	450	400
Net Weight (kg)	105	47
Engine Net Power (PS)	10	6.7

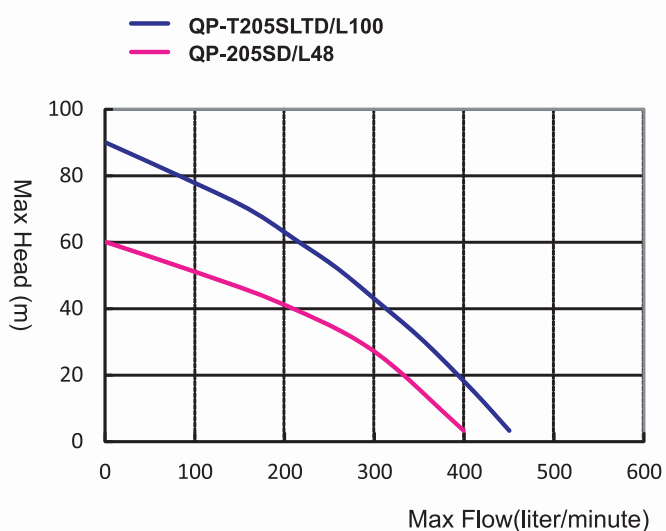
※Specification may be changed without prior notice!

## Performance Characteristic Curve

### Big flow Version



### High Pressure Version



Manufactured by:

**MATSUSAKA ENGINEERING CO., LTD.**

<http://www.qp-pump.com>

Head 23, Kanda-Matsunaga cho, Chiyoda ku, Tokyo, Japan

Office TEL: +81-3-3257-6130 FAX: +81-3-3257-6129

Plant 2155, Nonaka, Taki cho, Taki gun, Mie-pref, Japan

TEL: +81-598-39-3211 FAX: +81-598-39-3131



Distributed By: